

- Wireless, Balanced RF SAW Filter
- Revision 0: April 2014

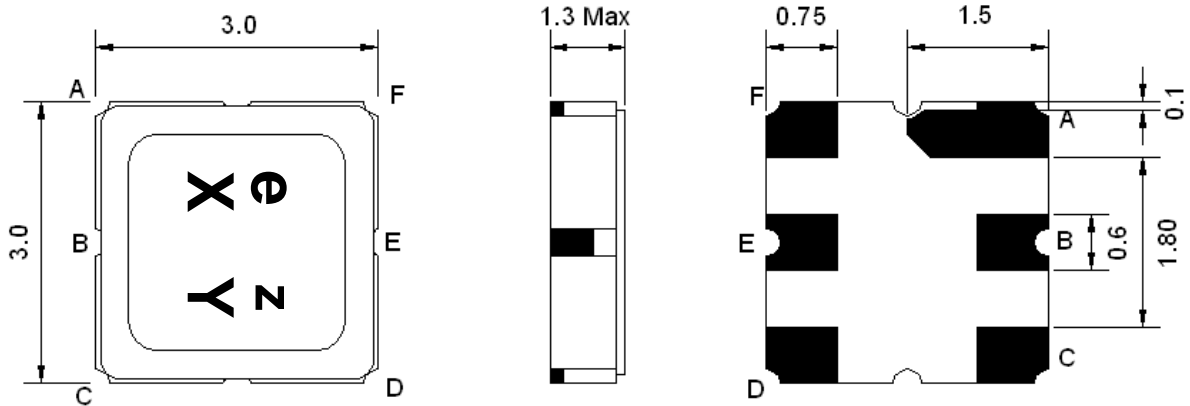
Electrical Characteristics

MAXIMUM RATING				
PARAMETERS DESCRIPTION	UNIT	MINIMUM	TYPICAL	MAXIMUM
Operating Temperature Range	°C	-40	-	+85
Storage Temperature Range	°C	-45	-	+85
Maximum DC Voltage	V	-	-	0
Maximum Input Power	dBm	-	-	10
Source Impedance (unbalanced) ⁽¹⁾	Ω	-	50	-
Load Impedance (balanced) ⁽¹⁾	Ω	-	200	-
Package type & size	S23			
Length x Width	mm ²	-	3.0 x 3.0	-
Height	mm	-	-	1.3

ELECTRICAL SPECIFICATION				
PARAMETERS DESCRIPTION	UNIT	MINIMUM	TYPICAL	MAXIMUM
Center Frequency (Fo)	MHz	-	903.0	-
Insertion Loss within 902.0 ~904.0 MHz	dB	-	2.6	3.2
Amplitude Ripple within 902.0 ~904.0 MHz	dB _{p-p}	-	0.4	0.8
Attenuation:				
10.0 ~ 862.3 MHz	dB	35	48	-
942.3 ~ 1200.0 MHz	dB	35	50	-
VSWR(Input) within 902.0 ~904.0 MHz	-	-	1.7	2.2
VSWR(Output) within 902.0 ~904.0 MHz	-	-	1.7	2.2

Notes: (1) With Matching Network

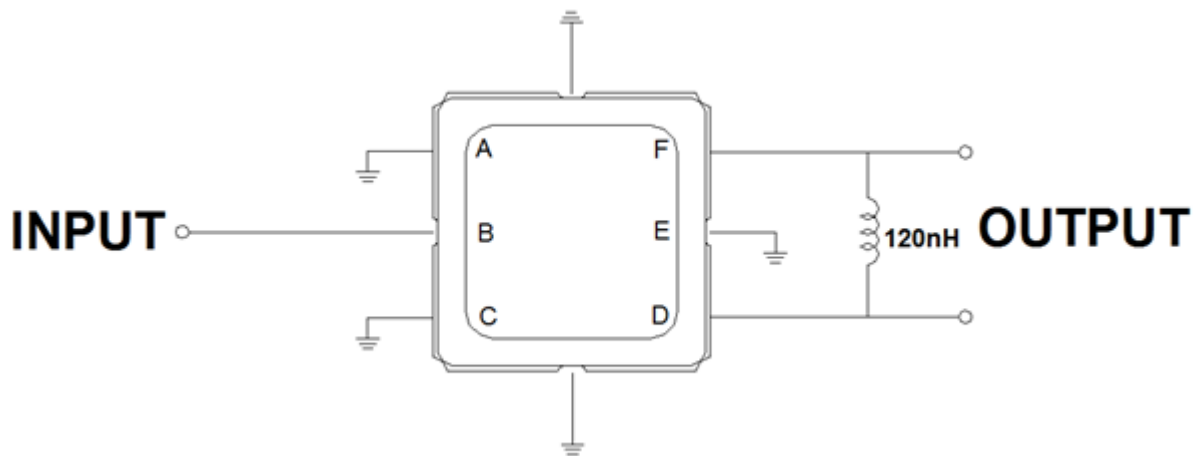
Package Dimensions



Marking Descriptions	
e	Wireless Application
z	Series Number
X	Date Code (Year)
Y	Date Code (Month)

Pin Description	
A, C, E	Ground
B	Input
D, F	Balanced Output

Testing Environment

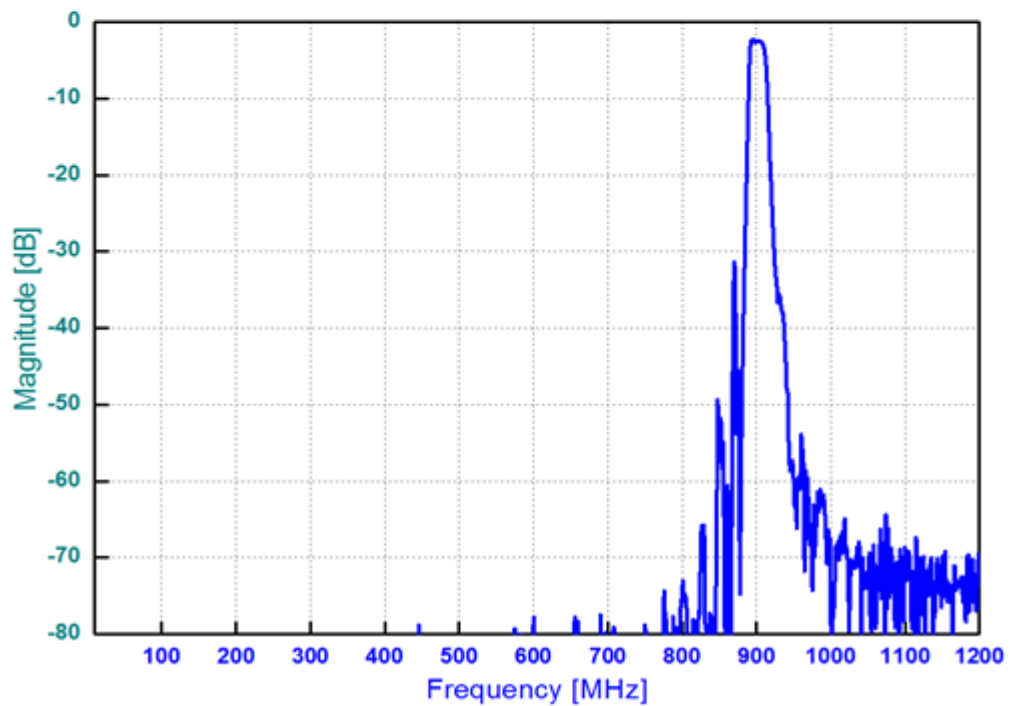
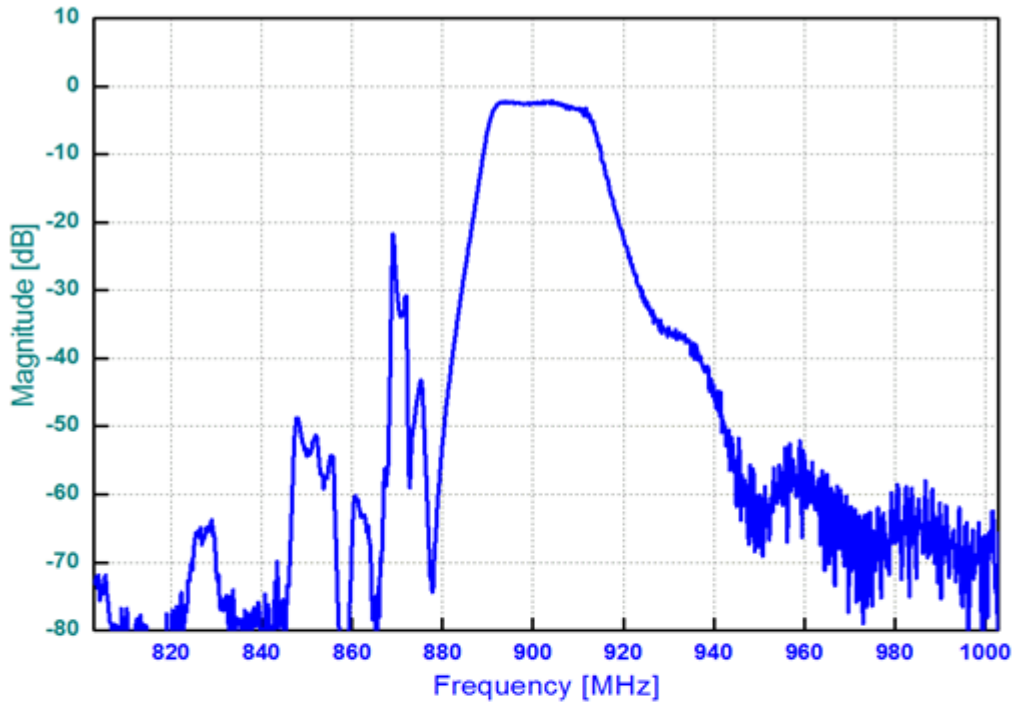


Source Impedance: 50 Ω

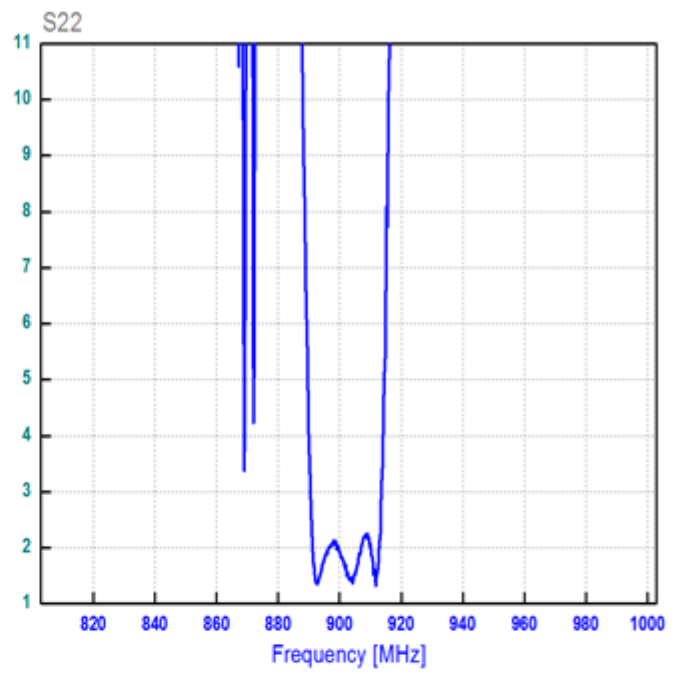
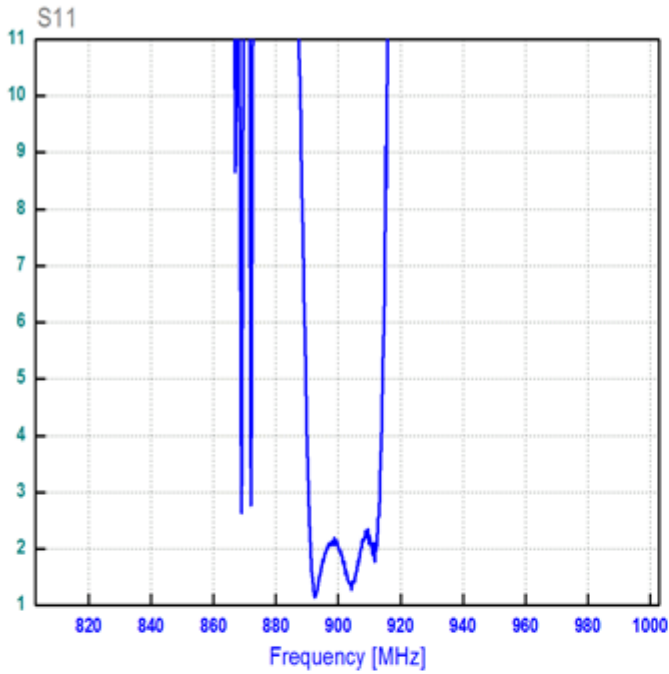
Load Impedance: 200 Ω

Frequency Characteristics

Frequency Response



VSWR



Smith Chart

